



CHALLENGE ORDINARY

“OUR JOB IS TO GET TO
KNOW YOU AND YOUR
NEEDS, CREATE THE
BEST SOLUTION AND
THEN DELIVER IT.”



HELLO

**engineerroom is a design practice providing
a delivery-driven consultancy service.**

Our cross disciplinary approach combining the specialisms of architecture, interior design, space management, brand, strategy, 3D visualisation and project co ordination, offers our clients an integrated design consultancy built around their needs both physically and financially.



CONTENTS

ARCHITECTURE

- 1 West London Free School, London / Lister Gate, Nottingham
- 2 Princess Street, Manchester / Church Road, Leyton, London
- 3 The Hyde, Hendon, London / Eastbury Avenue, Northwood, London
- 4 Merrow House, Guildford / Camden Rd, London

INTERIOR DESIGN

- 5 Pernod Ricard Headquarters, Chiswick Park / 55 Whitehall and 3-8 Whitehall Place, London
- 6 Herbert Smith Law Firm, London / International Law Firm, London
- 7 The Walbrook Building, GSMA, London / Alexandra Palace, London
- 8 St Jame's Place, London / EMD Cinema, London
- 9 CRISIS, London / Urban Planning Council Headquarters (UPC), Abu Dhabi

ARCHITECTURE PROJECTS



West London Free School

📍 Hammersmith, London

Working with Wilmott Dixon we have recently completed the new West London Free School, Hammersmith London.

The project is a free school located in West London and the scheme consists of the refurbishment of a large Victorian orphanage (which has more recently been used as offices), and construction of a new 4 storey steel frame brick and render clad building to the rear, the two buildings are linked via a small atrium which contains the main stairs and circulation. There is also a small lodge (house) to the front of the site which is also to be refurbished into music and teaching rooms.

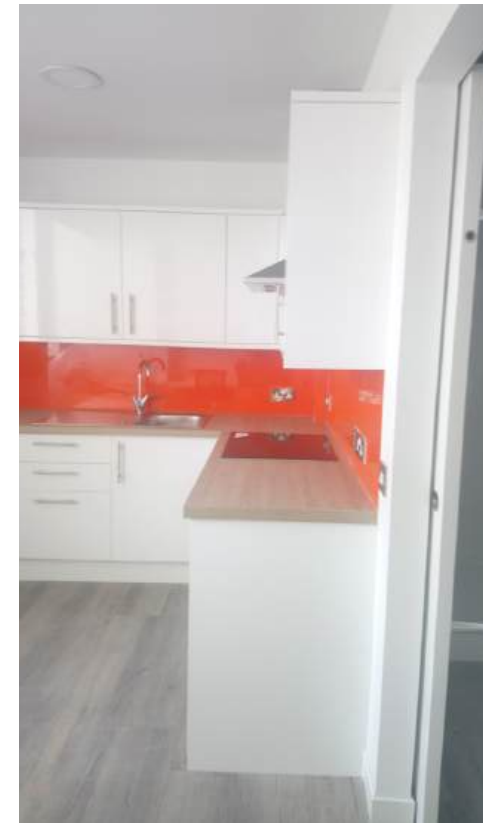
The project value of the base scheme is approximately £12m.



PROGRAMME	12 Months
APPOINTMENT	Architects
CLIENT	Wilmott Dixon

Listergate

📍 Nottingham



Working on behalf of a large Property Investment company, we repositioned a traditional prime retail store with large areas of ancillary storage on multiple upper floors, to provide new ground floor retail, together with conversion of the upper floors to provide modern student accommodation comprising 28 self contained student flats with ensuite facilities.

Construction value approximately £4m.

PROGRAMME	9 Months
APPOINTMENT	Architects
CLIENT	Wittington Property Investments Ltd



Princess Street Manchester



Refurbishment of a Grade 2 listed Victorian building, extending to approx. 60,000 sq ft on ground and 5 upper floors to provide modern contemporary office accommodation on the upper floors together with ground floor retail and leisure.

Budget cost circa £7m.

PROGRAMME	On Going
APPOINTMENT	Architects/Interior Designers
CLIENT	Wittington Property Investments Ltd

Church Road Leyton, London

Proposed New Build purpose-built mixed-use development comprising of 38 residential units in a mixture of 1 – 2 and 3 bed configurations over 6 floors, the development also includes for approx. 5000 sq ft of ground floor commercial space.

The scheme is designed to incorporate the latest in energy efficient technologies and is currently at the planning stage, with the aim to be on site in late 2023.



PROGRAMME	Planning Stage
APPOINTMENT	Architects
CLIENT	Private Developer

The Hyde

📍 Hendon, London

New build residential development comprising 18 one- and two-bedroom apartments set over 4 floors together with basement car parking for 18 vehicles. The development is currently on site with completion due August 2022.

Construction value £4m.



PROGRAMME	Completion Autumn 2022
APPOINTMENT	Architects
CLIENT	Private Developer

Eastbury Ave

📍 Northwood, London



The scheme comprises of 9 exclusive 3 double bedroom apartments over 5 floors with large living and entertaining space together with bespoke kitchen and bathroom facilities throughout, the scheme is set within landscaped grounds and includes for onsite car parking.

PROGRAMME	Project Completed 2018
APPOINTMENT	Architects
CLIENT	Private Developer

Merrow House

📍 Guildford

The new scheme at Merrow House will provide apartments for rent to 'older people' of 50 plus who are on modest or limited incomes in Guildford.

The new development is designed to enable independent living in a safe secure environment that can be adapted to meet the changing needs of each resident as required. Incorporating lifetime homes as standard, telecare and meeting the 10 principles of the happi report means that it is intended to be a home for life.



PROGRAMME	15 Months
APPOINTMENT	Architects/Interior Designers
CLIENT	Guildford Sunset Homes

Camden Rd

📍 London

The proposed design is of the highest architectural quality, and will use materials which respond to the surrounding area and the adjacent Conservation Area. The supporting 3D modelling images provide an indication of the impact of the proposed scheme on the wider townscape. It is considered that the proposed scheme would enhance the townscape through the addition of a thoughtfully-designed building which significantly improves the appearance of the existing Site.



PROGRAMME	-
APPOINTMENT	Architect/Interior Designers
CLIENT	Harry Motors LTD

INTERIOR PROJECTS



مجلس أبوظبي للتخطيط العمراني
ABU DHABI URBAN PLANNING COUNCIL



Pernod Ricard Headquarters

📍 Chiswick Park

Refurbishment of 85,000 sq ft of offices to provide the new Headquarters for Pernod Ricard the design requirements included for the creation of highly flexible accommodation with each floor representing the individual brands within the company. The design ethos incorporated the best practices for collaboration, wellbeing, and social interaction.

Construction value approximately £18m.



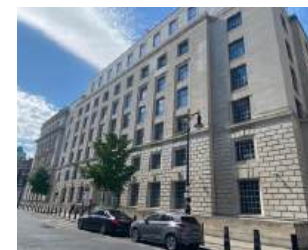
PROGRAMME 26 Weeks

APPOINTMENT Architects/Interior Designers

CLIENT Pernod Ricard

55 Whitehall and 3-8 Whitehall Place

📍 London



Refurbishment and upgrade of approximately 150,000 sq ft of offices, split between a Grade 2 listed building on Whitehall and 1970s office building at 3-8 Whitehall Place to provide a Government Department with the modern, flexible and highly energy efficient accommodation for a modern Hybrid Working World.

Current estimated cost £36m.

PROGRAMME Target Completion Date Spring 2023

APPOINTMENT Architects/Interior Designers

CLIENT Government Property Agency

Herbert Smith Law Firm

📍 London

Engineroom was tasked with enhancing and adapting HSF's current workplace to facilitate the return of employees post-Covid. The objective was to create a dynamic work environment with diverse settings to promote collaboration, offering breakout and meeting spaces equipped with cutting-edge technology. The design aimed to support and elevate both physical and virtual communications. Our team developed a cohesive design concept that seamlessly integrates existing elements with future proposals. This concept reinforces the connection with the base building architecture and establishes a robust design framework that complements the current fit-out and proposed changes. The implementation involved cost-effective design solutions aligned with the remaining 10-year lease.



PROGRAMME

6 Months

APPOINTMENT

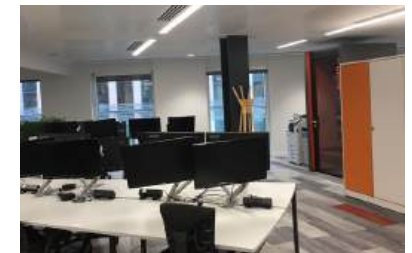
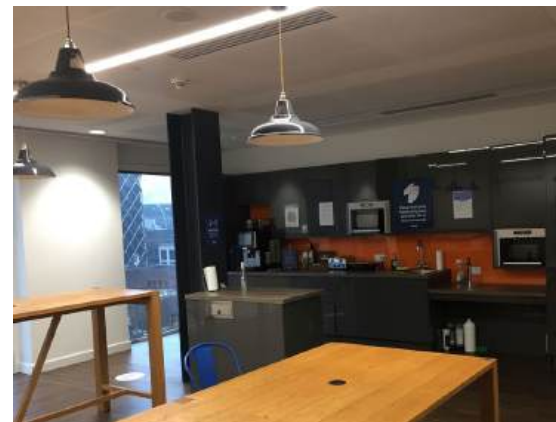
Interior Designers

CLIENT

Herbert Smith

International Law Firm

📍 Archer Street, London



Engineroom were appointed to provide the Client with a design to meet their desire for an 'Agile' working environment in line with the Client's anticipated headcount in the near future.

The Design and interior proposal provided the Client with a modern style of working through the use of agile furniture systems, allowing an increased number of 'work spaces' compared to the existing number of fixed person desks.

PROGRAMME

Completed

APPOINTMENT

Interior Designers

CLIENT

International Law Firm

The Walbrook Building, GSMA

London



GSMA appointed Engineroom as Interior Designers on their proposed new Global HQ at the Foster's designed Walbrook Building in the City of London.

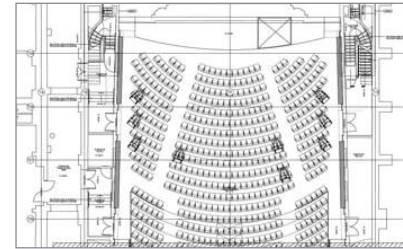
Engineroom's role was to create a design which encompassed New Ways of Working within a contemporary environment, allowing for a variety of collaborative and contemplative areas. In addition, GSMA anticipated strong expansion growth over the next 3/5 years, with the design providing flexibility for their organic growth.

PROGRAMME	4 Months
APPOINTMENT	Workspace Auditors/Interior Designers
CLIENT	GSMA

Alexandra Palace

London

Working in conjunction with Wilmott Dixon, Engineroom were employed to provide technical design solutions as part of the £18.6m restoration works of this historic building, with the aim of bringing back to their former glory some of the most historic parts of the building and to ensuring its economic future as one of London's leading heritage destinations.



PROGRAMME	Framework - Completed 2018
APPOINTMENT	Architects/Interior Designers
CLIENT	Wilmott Dixon

St, Jame's Place London

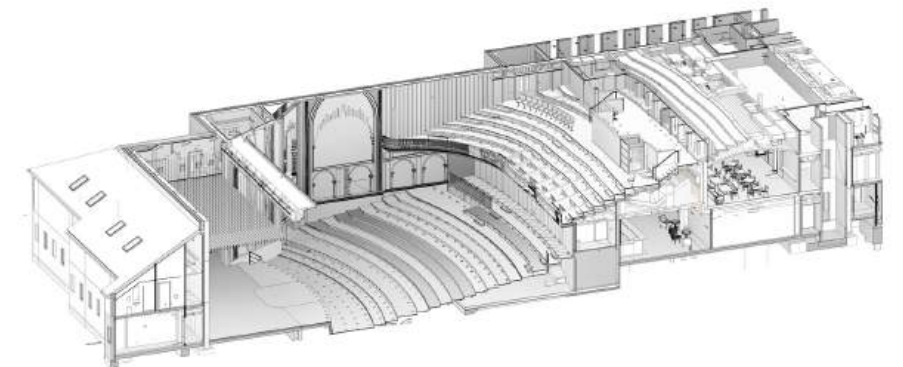
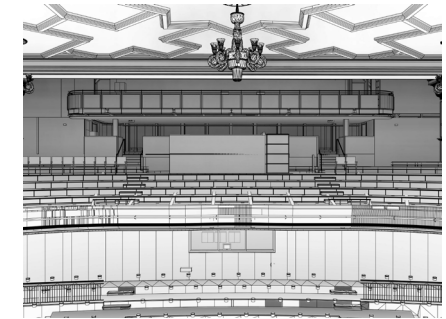
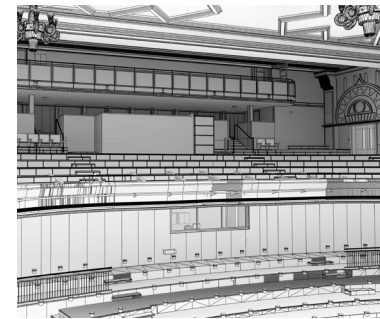


A comprehensive refurbishment of the buildings at No. 11 & 12 St James's Square located to the North-West side of St James's Square. 11 St. James's Square is a Grade II* Listed terraced townhouse and no 12, a Grade II listed terraced townhouse with an extensive modern office extension and atrium to the rear.

PROGRAMME	6 Months
APPOINTMENT	Interior Designers
CLIENT	Chinese Estates

EMD Cinema London

Coordinating with the project architects, interconnecting our proposed seating BIM model with the architects existing BIM Model. for a CDP package to developing the Employer's Design Information and Design and delivering RIBA Workstage 4 for altering the pitch and seating of the current Upper Circle and develop the design using a timber structure, built off the existing concrete raked floor.



PROGRAMME	12 Months
APPOINTMENT	Interior Designers
CLIENT	Waltham Forest EMD

CRISIS

London



Crisis UK, situated in London have acquired a new property with the aspiration to reconfigure and accommodate office space for 82 staff. The reception area, on the ground floor, will be fitted with desk space for 4 members of staff and 4 pods for conversations with members. The basement will include a locker room, bike storage and maintenance room.

PROGRAMME	6 Months
APPOINTMENT	Interior designer
CLIENT	CRISIS

Urban Planning Council Headquarters

Abu Dhabi

Engineroom were appointed to create the interior concept design for the UPC New Headquarters building, extending to approx. 130,000sqft, to include for collaborative work space, meeting rooms, restaurant and library.

The building has been awarded the 4 Pearl Estidama rating on sustainability.



PROGRAMME	6 Months
APPOINTMENT	Interior Designers
CLIENT	Urban Planning Council, Abu Dhabi



SERVICES

ARCHITECTURE AND INTERIOR SERVICES

Full design services from Inception
to on site completion

Feasibility Studies

3D Visualisation

Space Planning

CONTRACTOR SERVICES

CDP Packages

Stage 3 & 4 Design Packages

BIM Level 2

For Further details email Richard@Engineroom.company